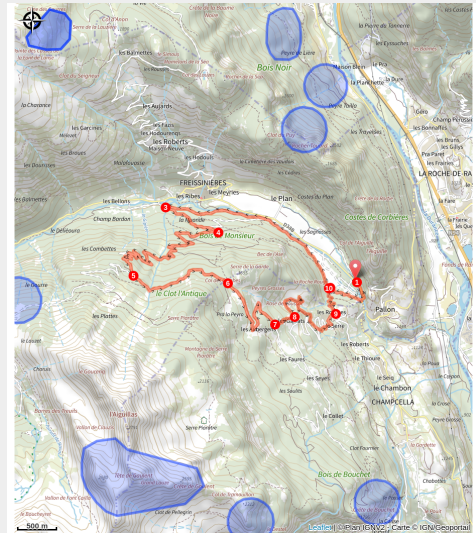


# Col des Combes circuit (no. 9)

Hautes-Alpes



Col des Combes (Thibaut Blais)



**A very scenic route alternating between forest and the hamlets of Champcella.**

Contrasting scenery between an ascent scattered with a few of the hamlets of Champcella and a descent through the huge forest on the north-facing side of Freissinières.

## Useful information

Practice : Mountain Bike

Duration : 2 h 30

Length : 14.7 km

Trek ascent : 882 m

Difficulty : Bleu (facile)

Type : Loop

Themes : Fauna, Flora, Géologie

# Trek

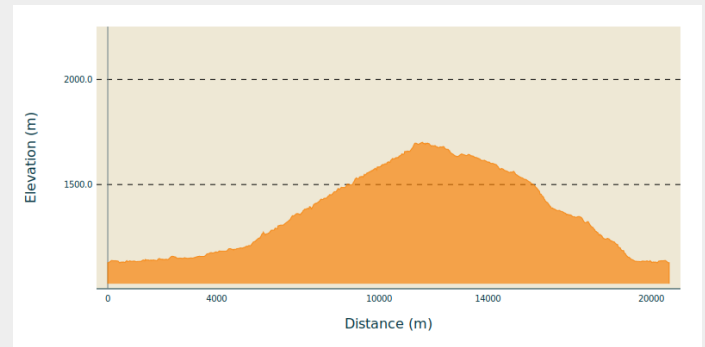
**Departure** : Car park at the treetop adventure park ("Freissinières Aventure Nature") at the Pavis bridge, Freissinières

**Arrival** : Car park at the treetop adventure park ("Freissinières Aventure Nature") at the Pavis bridge, Freissinières

**Markings** : 🚩 VTT FFC boucle locale

**Cities** : 1. Freissinières  
2. Champcella

## Altimetric profile

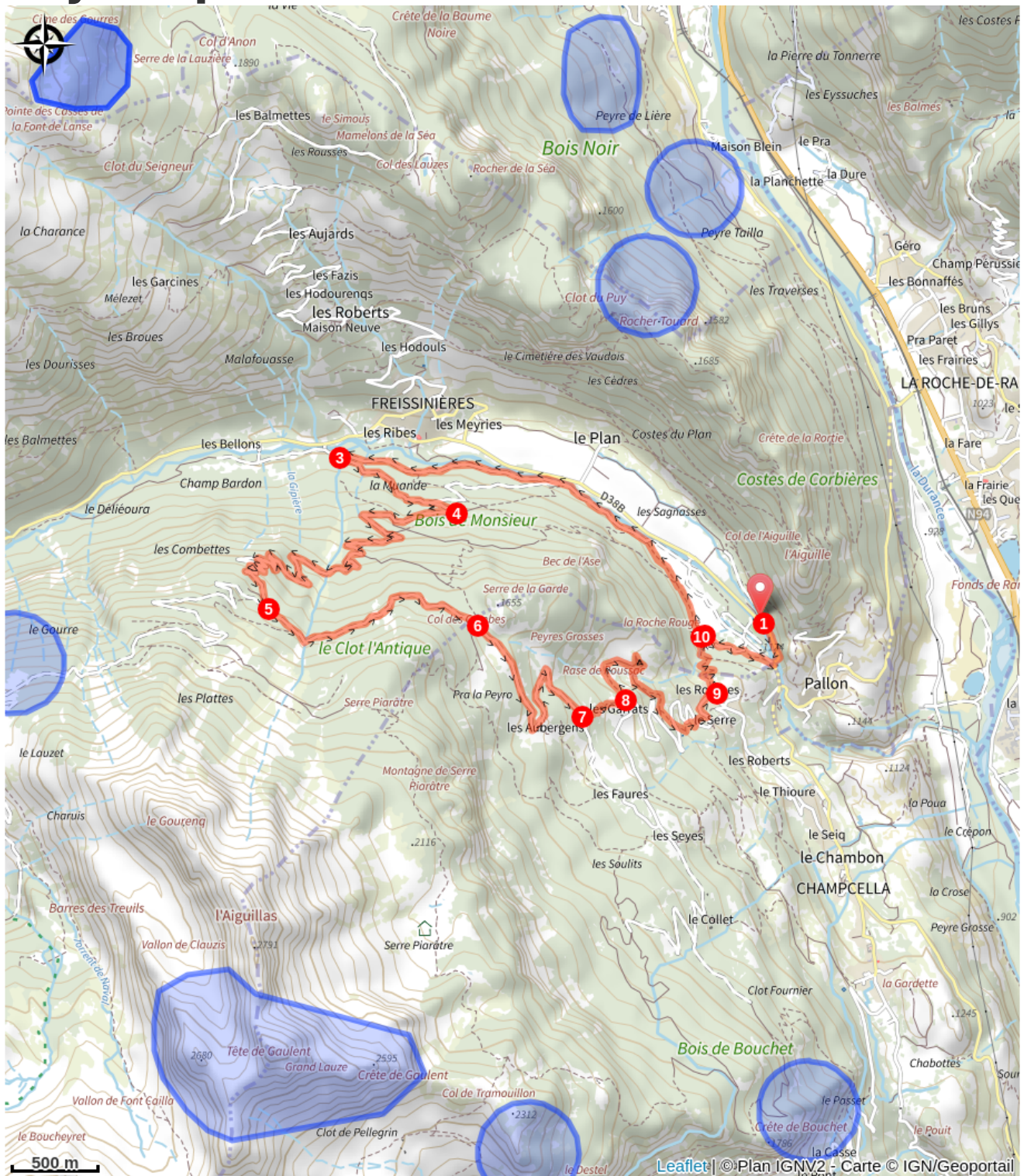


Min elevation 1128 m Max elevation 1701 m

The route starts at the bridge spanning the Pavis, amidst cool, fresh surrounding on a track running upstream along the right-hand bank of the Biaysse mountain stream.

1. 700 metres from the starting point, leave the track and continue straight ahead towards Les Rousses
2. In Les Rousses, when you come to the end of the track on a bend, head to the right on the paved road and continue on uphill. After 200 metres, leave the road right and then follow the track which crosses the road twice before coming to Rase de Roussac
3. Rejoin the road and then carry on uphill. After 1 kilometre, turn right towards Les Faures and then carry on towards the Col des Combes
4. At the Col des Combes, carry straight on along a balcony path
5. 350 metres after crossing the mountain stream Le Gourenq, head right and go downhill towards the park country cabin ("Cabane Pastorale du Parc") and then La Muande
6. At the end of the track, go right onto another track which follows the Biaysse downstream on the right-hand bank, bringing you to your starting point

# On your path...



# All useful information

## Les chiens de protection des troupeaux - VTT

### **Advices**

Rescue services contact details: Secours Montagne(Mountain Rescue): +33 (0)4 92 22 22 22 or 112

Show consideration for the work of farmers, livestock keepers and owners

Take your litter home

Do not take shortcuts across pastureland

### **How to come ?**

#### Transports

Public transport >> [www.pacamobilite.fr](http://www.pacamobilite.fr)

Consider car-sharing >> [www.blablacar.fr](http://www.blablacar.fr)

For more information, ask at the Tourist Information Office nearest to the trail starting point >> [www.paysdesecrins.com](http://www.paysdesecrins.com)

#### Access

10.5 km from L'Argentière-la-Bessée, take the N94 and the D38.

#### Advised parking

Parking du kiosque, Freissinières

### **Source**



Pays des Ecrins

<https://www.paysdesecrins.com>