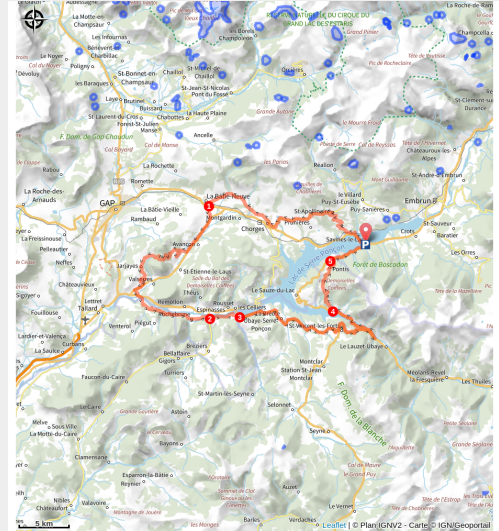


# Les Trois Rivières

Hautes-Alpes



(Thibault CHABERT)



Sport is on the cards! A real "Best Of", this loop is everything that fans of physical and sporting challenges are looking for in a nutshell.

The Avance, Durance and Ubaye are the three iconic rivers of the valleys crossed on this route. Whether on the plains or tucked away between the mountains, the roads you take will leave nobody indifferent. But be prepared for a few challenges, as the mountain passes on this route will require some serious physical effort. But you'll be handsomely rewarded!

## Useful information

Practice : Road bike

Duration : 5 h 30

Length : 98.0 km

Trek ascent : 3810 m

Difficulty : Rouge (difficile)

Type : Loop

Themes : Point de vue, Lac et glacier

# Trek

**Departure** : Town Hall car park, Savines-le-Lac

**Arrival** : Town Hall car park, Savines-le-Lac

**Cities** : 1. Savines-le-Lac

2. Saint-Apollinaire

3. Prunières

4. Chorges

5. Montgardin

6. La Bâtie-Neuve

7. Avançon

8. Saint-Étienne-le-Laus

9. Jarjayes

10. Valsерres

11. Venterol

12. Piégut

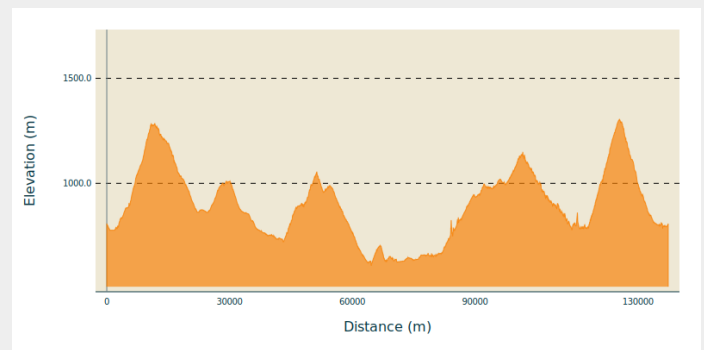
13. Rochebrune

14. Ubaye-Serre-Ponçon

15. Le Lauzet-Ubaye

16. Pontis

## Altimetric profile

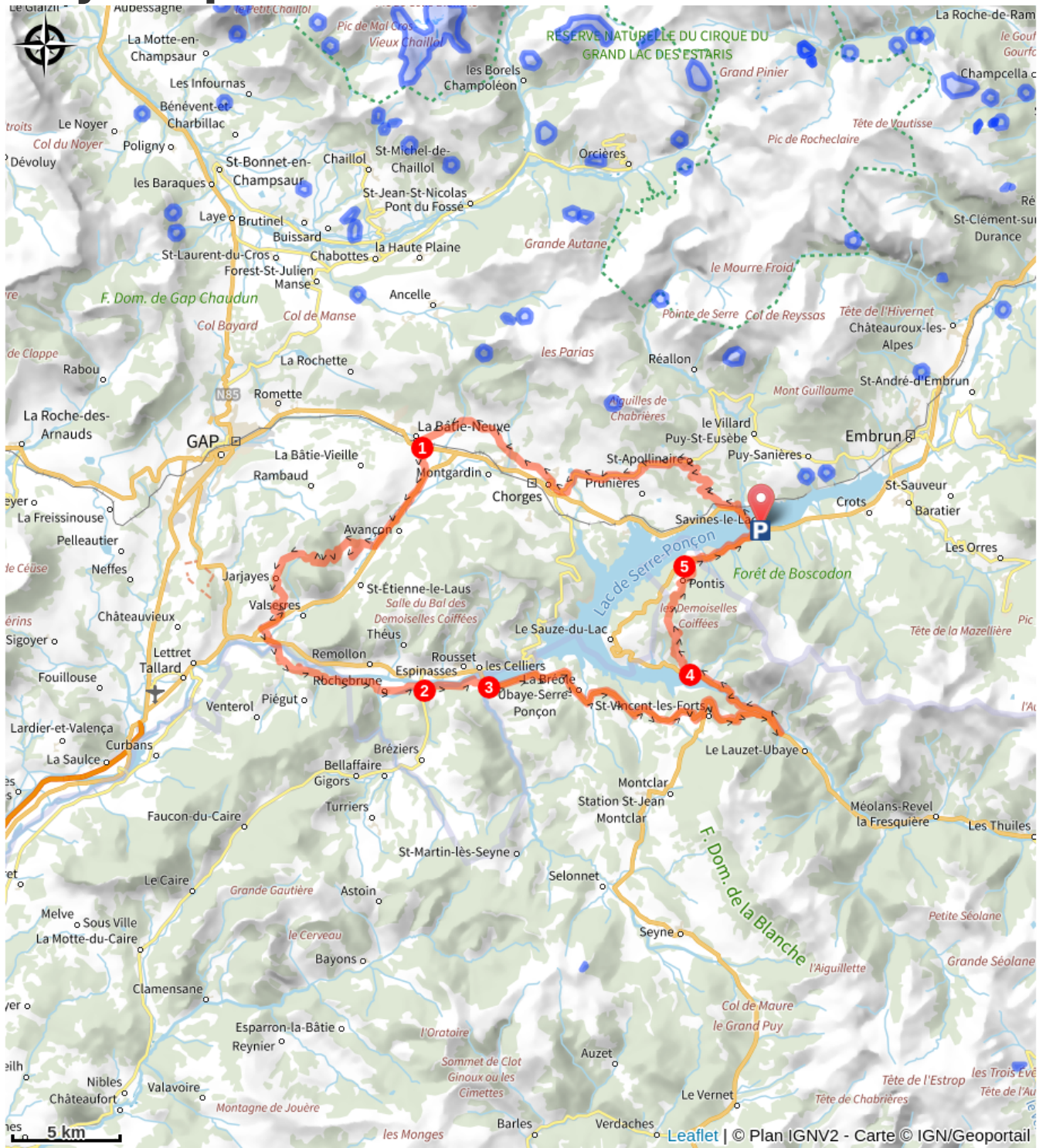


Min elevation 608 m Max elevation 1305 m

1. From Savines-le-Lac, head towards the bridge over the Durance. Once on the other side of the river, follow the signs for Saint-Apollinaire, the destination of this first 7km climb. This route has its own unmistakable ambience. Take a short break at the lookout before heading back towards Chorges. Enjoy the descent and, finally, in the centre of Chorges, opposite a "no-entry" sign, turn right towards Gap (Chemin du Moulin). Pass two roundabouts in quick succession and a car park, then turn left and follow this small road for 5 km until you reach the hamlet of Les Carles. Continue straight ahead until you come to a crossroads, then turn left onto the "Route des Borels". Descend to the village of La Bâtie-Neuve and skirt the police station to head towards La Bâtie-Vieille. Cross a railway line and then cross the N94 very carefully.
2. Continue on the D11 then head towards Tallard. It descends as far as the D942. Turn right, still towards Tallard, following the Avance for 4 km. Then take a right fork towards Notre-Dame-du-Laus and continue towards the Col du Tourrond. Take a series of bends before reaching the summit, then descend to Jarjayes. Continue for a short distance and join the D942, opposite a tennis court. Turn right and this time reach the D900b at a carpenters' workshop. Go left for 300 m, then right down towards Piégut. Cross the Durance and, at the next crossroads, turn left towards Piégut. Stay on this pleasant road (D704) before leaving it and taking the one heading towards Rochebrune. Cross the plain while travelling alongside the Durance (and a leisure centre). Go past Rochebrune and, at the crossroads, turn right for 200 m.
3. Now take a left fork and follow the Durance EDF canal. Pass Gréoliers until you reach a departmental road.

4. Then turn right and follow the signs for Barcelonnette (D900b) for almost 20 km. This road climbs upwards and at certain points offers great views over the Durance. Further on, the landscape becomes even more open, with panoramic views of Lake Serre-Ponçon, the Ubaye and its mountainous terrain. After a lookout point, you have just 5 km to go before turning left towards Savines (D954). Continue down to the valley and cross the Ubaye river. Continue along a pleasant lakeside road, go through a tunnel and then, shortly after a church and its cemetery, turn right and climb towards Pontis (D7). A fine 5.3 km climb awaits you, with an average gradient of 9%.
5. At the pass, enjoy a well-deserved break and a beautiful panorama of Lake Serre-Ponçon and the surrounding mountains. Then head back down towards Pontis, through a beautiful forest and rejoin the D954. Finally, return to Savines-le-Lac and take in all the beautiful views.

# On your path...



# All useful information

## **Advices**

- Respecter le sens de circulation des parcours.
- Respecter les autres usagers de la route.
- Le port du casque est obligatoire
- N'hésitez pas à consulter info route 05 avant de partir

## **How to come ?**

### Transports

From **Gap** or **Embrun**:

- Zou! Network : Line 69 / Frequency : Every 4 hours

More information: <https://zou.maregionsud.fr>

### Access

Follow the N94 from Gap or Embrun to Savines-le-Lac.

There is ample parking near the town hall.

### Advised parking

Town Hall car park, Savines-le-Lac

## **Source**



Serre-Ponçon

<https://www.serreponcon.com>